

THE BEST WAY TO SAY PACKAGING



Shrink-wrap machines

Made in Italy



▶ **Ambra** Series

▶ **Aragon** Series

▶ **Ecofard** Series

▶ **Opale** Series

▶ **Combi** Series

POWERED BY

ATLANTA
NETWORK

Atlanta[®]
PACKAGING TECHNOLOGY & MACHINERY

► Designed for your products

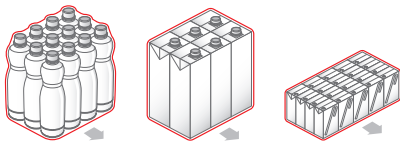
Atlanta shrink-wrap machines are designed for a **broad range of food, beverage, personal care and industrial products**

- Boxes
- Tins
- Tanks
- Dispensers
- Cans
- Bottles
- Trays
- Bricks
- Jars
- Spray cans
- Tubes
- Cases

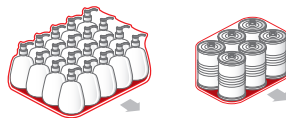


► Pack types

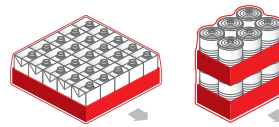
FILM ONLY



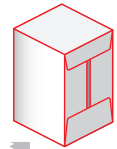
FILM ONLY and PAD+FILM



FILM ONLY and TRAY + FILM



FILM ONLY TRAY + FILM WRAP AROUND

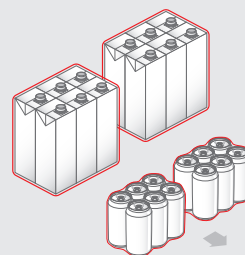


► Utmost efficiency

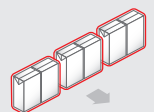
- **Quick format changeover** through the standard touch screen control panel; it normally does not require replacing parts.
- **Movements** activated by high energy efficiency brushless and asynchronous motors.
- High precision centring of the **printed film also on several lanes.**
- **Double layer:** precision stacker to overlay "tray+tray" products.
- **Storing and supplying service** for original spare parts to maintain maximum efficiency of your machine.



single lane



double lane



triple lane

Shrink-wrap machine for secondary packaging

RANGE OF Shrink-wrap machines

The range

Atlanta automatic shrink-wrap machines are designed to be incorporated into your production cycle simply and efficiently.

Each module comprises customisable modules according to the specific characteristics of your products, to provide you a **completely customised machine** without compromising on the advantages and reliability of a standard machine.

We understand that each line has specific needs, therefore the **Atlanta Shrink-wrap Machine** models are designed to be easily **implemented with customised functions** that meet all your needs.

An extensive range of optionals are available to accommodate specific requirements such as double or triple lane processing for small formats and products with non-standard shapes or the insertion of vertical pads



► Ambra Series [Automatic shrink-wrap machines]

Film

- Ambra
- Ambra S
- Ambra M
- Ambra SM

Film and pad+film

- Ambra C
- Ambra SC

Film and pad/tray + film

- Ambra V
- Ambra SV

Optional film only



Production

30 ppm
on single lane

90 ppm
on triple lane
film only

► Ecofard Series [High-speed shrink-wrap machines]

FILM

- Ecofard
- Ecofard F
- Ecofard SF
- Ecofard DL
- Ecofard Cont
- Ecofard Cont S

PAD + FILM

- Ecofard C
- Ecofard SC
- Ecofard Cont C
- Ecofard Cont SC

PAD/TRAY + FILM

- Ecofard V
- Ecofard SV
- Ecofard Cont V
- Ecofard Cont SV



Production

80 ppm
on single lane

240 ppm
on triple lane
film only



► Opale Series [Shrink-wrap machines with tray or pad]

FILM

- Opale
- Opale F
- Opale Cont

PAD + FILM

- Opale C
- Opale Cont C

PAD/TRAY + FILM

- Opale V
- Opale Cont V



Production

60 ppm
on single lane

180 ppm
on triple lane
film only



Atlanta reserves the right to change the design and/or specification of products without prior notice. Part of this information is general only; the customer must ensure they apply to their needs; some functions are optional.

**NEW
2022**

► Aragon Series [for high-speed and extremely intensive work cycles]

FILM

- Aragon
- Aragon S **NEW**

Extra-strong frame and mechanical parts with carbon fibre wrapping bars for a long life machine even with intense work cycles.
Dedicated adjustable air flow partitions for each lane.
5 cooling fan units: 4 upper and one bottom for rapid cooling down of the packs.



► Combi Series [Combined wrap-around system plus film and tray+film]

“All in one” solution for all those who need to pack their product using both film and cardboard boxes.

Combi is the packaging machine that wraps your products using tray only, tray with film and wrap around box packs.

TRAY, TRAY + FILM, WRAP-AROUND

- Combi Raff + BS
- Combi Raff M + BS
- Combi Raff P&P + BS
- Combi Raff + A
- Combi Raff M + A
- Combi Raff P&P + A
- Combi
- Combi 90M
- Combi Medium
- Combi S
- Combi SHC
- Combi L Cont SHC





Atlanta[®]
PACKAGING TECHNOLOGY & MACHINERY

ATLANTA spa Via Europa, 13 - 40010 Sala Bolognese (BO) - Italy | Tel. +39 051 722792 | info@atlantapackaging.eu
Sales: sales@atlantapackaging.eu | Support: service@atlantapackaging.eu | Spare parts: s pares@atlantapackaging.eu

www.atlantapackaging.eu